

**Overview**

Evaluation criteria:

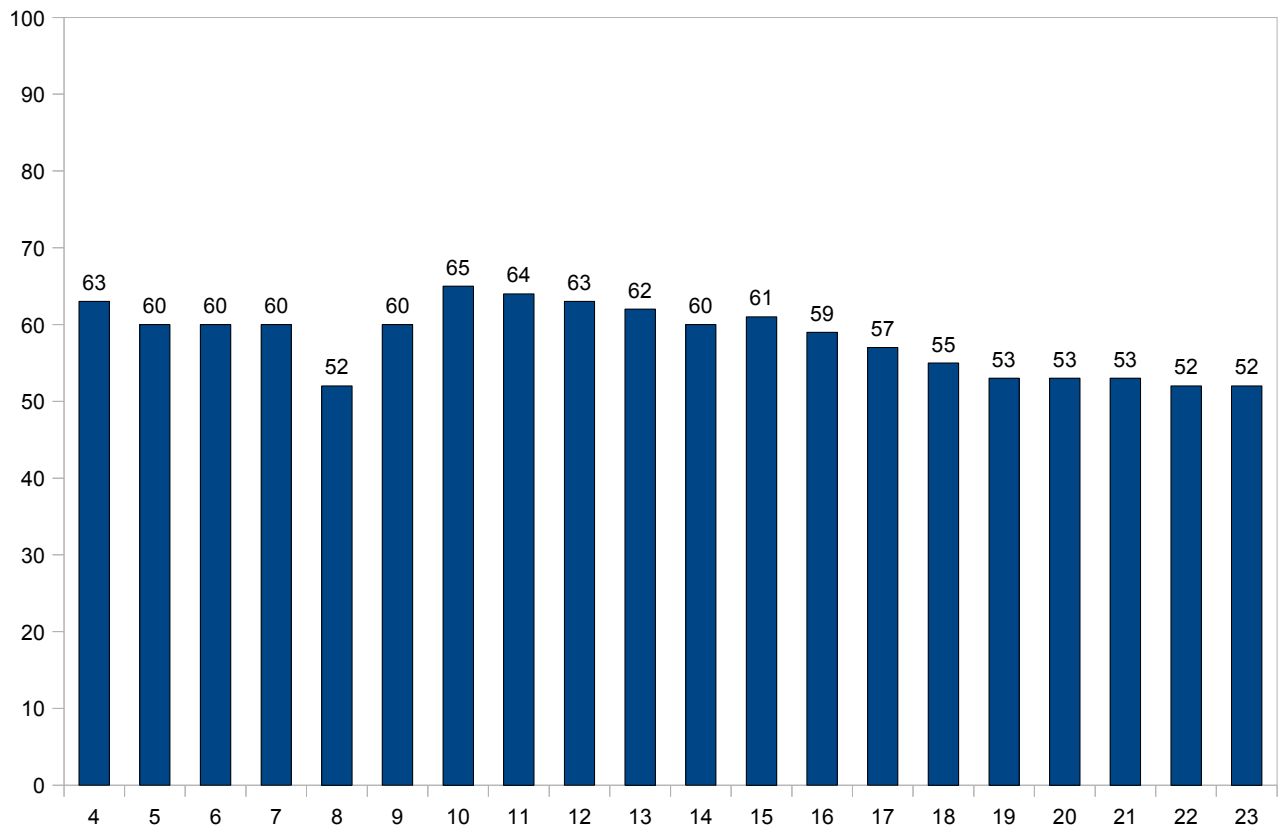
Percent

Percent 50

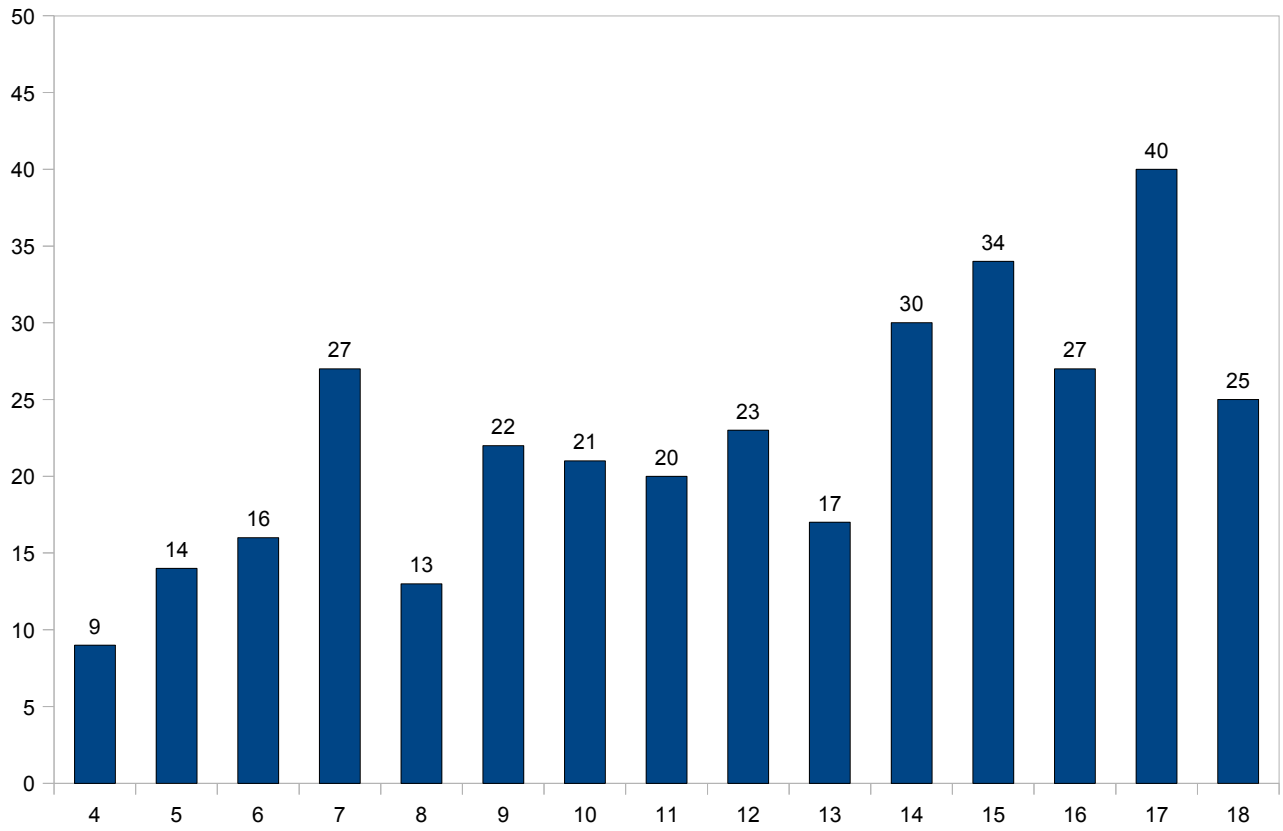
<b>Optimisation of objectives</b>	<b>43</b>		
<b>Long-term optimisation of objectives</b>	<b>36</b>		
<b>Willingness to take risks / Intensity of interventions</b>	<b>5</b>		
<b>Number of interventions</b>	<b>5</b>		
<b>Use of methodological resources</b>	<b>87</b>		
<b>Early utilisation of information</b>	<b>53</b>		
<b>Monitoring the development of objectives</b>	<b>29</b>		
<b>Economic Efficiency</b>	<b>45</b>		
<b>Flexibility / strategy changes</b>	<b>37</b>		
<b>Prioritisation of main objectives</b>	<b>47</b>		
<b>Intensity of interventions in the crisis phase</b>	<b>5</b>		
<b>Monitoring of objectives in the crisis phase</b>	<b>85</b>		

Standard sample: Standard (n=174)

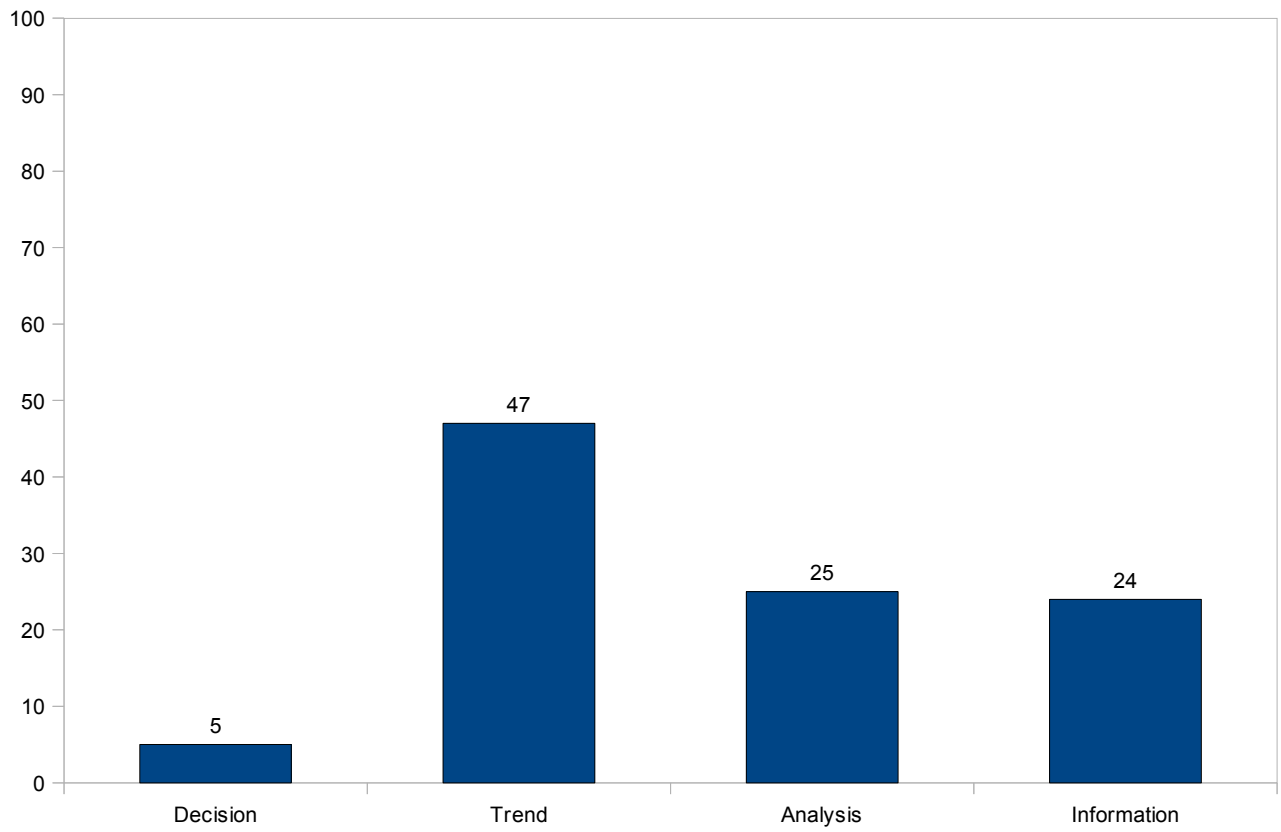
### Goal Optimization



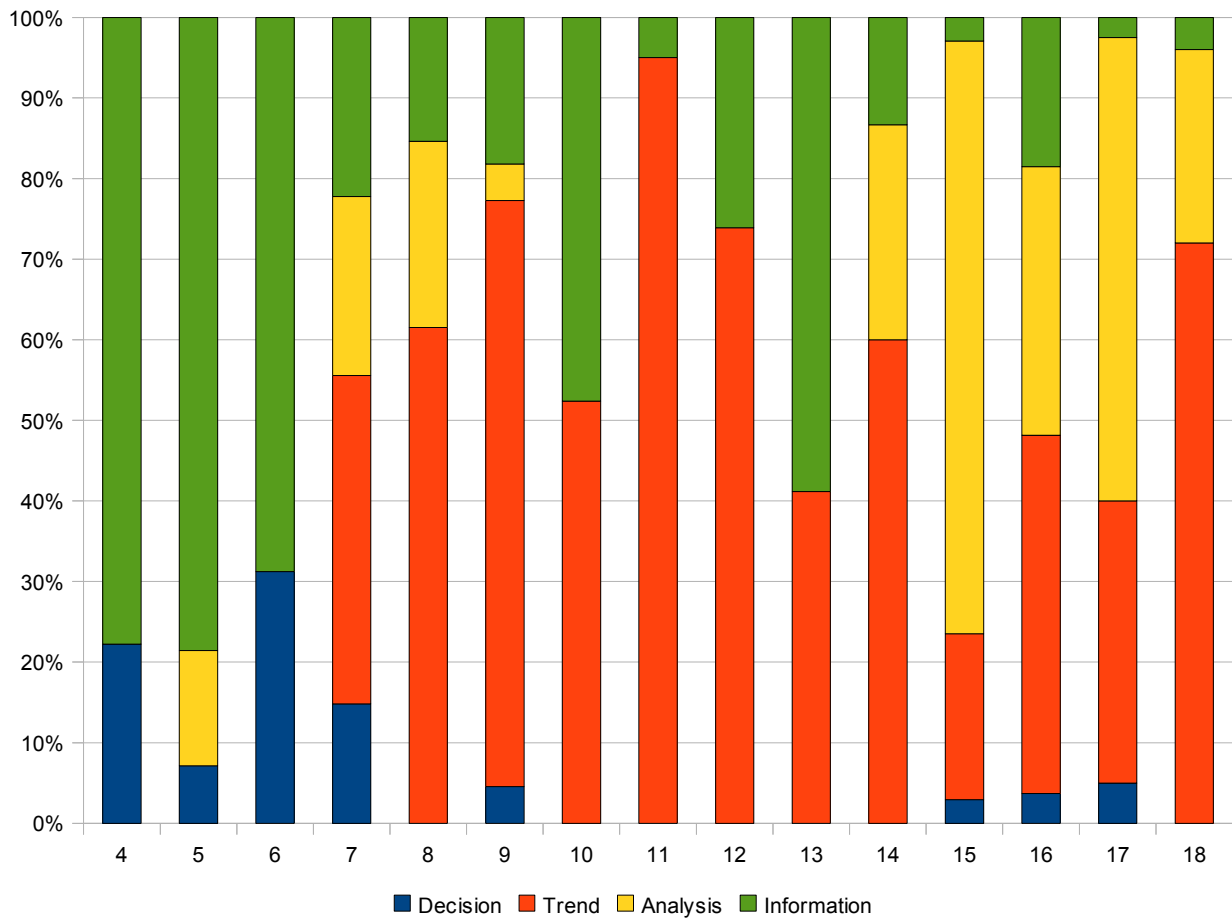
### Activity in the Course of the Exercise



### Percent of Individual Types of Action



### Percent of Types of Actions Per Period



## Log of the System's Variables (Period No. 1 to 23)

Period	Goal	StLv	Env	Finances	Ssec	House	Job	Tran	Time
1	73	73	118	102	85	59	75	60	0
2	72	72	106	105	80	58	79	63	0
3	68	72	95	111	76	57	82	67	0
4	63	71	89	115	74	56	84	71	295
5	60	72	84	121	71	56	88	75	295
6	60	73	82	125	70	55	95	82	295
7	60	76	79	128	74	55	100	87	295
8	52	77	67	125	80	53	99	88	196
9	60	87	69	109	92	53	115	90	296
10	65	96	70	97	102	63	122	92	295
11	64	97	72	91	110	66	116	93	295
12	63	96	73	90	108	68	112	93	295
13	62	94	74	89	104	70	109	93	295
14	60	92	73	90	99	71	105	92	295
15	61	91	74	90	95	72	107	90	295
16	59	89	75	89	91	73	102	89	295
17	57	85	76	88	88	70	97	85	295
18	55	81	78	87	86	68	89	82	295
19	53	79	79	85	84	65	89	79	0
20	53	79	80	84	83	64	89	77	0
21	53	78	82	83	82	62	89	76	0
22	52	77	83	82	81	61	89	74	0
23	52	77	84	80	80	60	90	73	0

Time and Type of Decisions

Period	3	4	5	6	7	8	9	10	11	12	13	14	15	16	17	18
Road Construction	4300	4800		5000												
Docks	2000			3000												
Education	2100			2500	4200											
Public Health	1800															
Welfare Programs	3000						6000									
Housing Construction	2400															
Promotion of Industry	2800			4500											5000	
Environmental Protection	3500				4000								5300			
Culture / Leisure	2700															
Resorts / Hotels	3000		4000													
Chemical Industry	4700				4000									1500		
Textile Industry	3300			5500	6600											
Agriculture	6300															
Oil Production	6000															
Fishing	8000															

+ / -

Period	3	4	5	6	7	8	9	10	11	12	13	14	15	16	17	18
Road Construction	4300	+500		+200												
Docks	2000			+1000												
Education	2100			+400	+1700											
Public Health	1800															
Welfare Programs	3000						+3000									
Housing Construction	2400															
Promotion of Industry	2800			+1700											+500	
Environmental Protection	3500				+500								+1300			
Culture / Leisure	2700															
Resorts / Hotels	3000		+1000													
Chemical Industry	4700				-700									-2500		
Textile Industry	3300			+2200	+1100											
Agriculture	6300															
Oil Production	6000															
Fishing	8000															

Time and Type of Interventions in the System

Period	4	5	6	7	8	9	10	11	12	13	14	15	16	17	18
Road Construction	DID	I	D	AT		TT	IT		T		TITAT	ATAA	T	T	T
Docks	I		D	IIT		T	ITI	T	TI	I	TIAT	AA		TAT	T
Education	I		D	DAAT	TITT	T	T	T	T		TITA	A		TA	
Public Health	I			IITT	TA	TTT	TTT	T	TIT	TIT	T	A		TA	
Welfare Programs	I			T	TA	DAT	TT	TTT	T		TIT			TA	
Housing Construction				T		T	TI	TTT	T			A		AT	
Promotion of Industry	I	I	D	IAAT	TIT	T	I		TI	I	T	A		DAAD	AA
Environmental Protection	I	IA	I	ADAT	TAAA	TTA	TTI		TT	I	TA	ATAD	T	AA	TTA
Culture / Leisure		IA		T		TIIT					TT	A	TA	AAA	
Resorts / Hotels		IAAD		TI		TI	I	TTTT	IT		TA	A	ITA	AAA	TA
Chemical Industry		I		DAAA	A	I		TT	TTTT	TIT	TAAT	AATAT	TADA	AAT	T
Textile Industry		I	IIID	DAA		T	I	T	T	TII	TA	AA	TTTA	AATT	TT
Agriculture		I	III						TI	I	A	AT	I	AA	TATT
Oil Production		II	III				I	TITT		I		ITATA	IATTA	ATT	TTTAT
Fishing		I	I				I		I	ITT		AAA	I	AT	ITTT
Standard of Living														AAAA	A
Environment											AAAA	AAAA	AAAA	AAAA	AAAA
Public Finances															
Social Programs															
Housing Situation															
Jobs															
Transportation															
Rate of Exchange (\$)															
Price of Oil (\$)														A	
Revenue Tourism															
Revenue Chemical Industry												A			
Revenue Textile Industry												A			
Revenue Agriculture												A			
Revenue Export / Oil												A	A		
Revenue Fishing															

D – Decision

T – Trend

A – Analysis

I – Information

Only the first interventions are displayed



## Analysis log

Action	Variable	#
Information	Road Construction	4 x
Information	Docks	8 x
Information	Education	3 x
Information	Public Health	5 x
Information	Welfare Programs	2 x
Information	Housing Construction	1 x
Information	Promotion of Industry	8 x
Information	Environmental Protection	5 x
Information	Culture / Leisure	3 x
Information	Resorts / Hotels	6 x
Information	Chemical Industry	3 x
Information	Textile Industry	7 x
Information	Agriculture	7 x
Information	Oil Production	11 x
Information	Fishing	7 x
Analysis	Road Construction -> Environmental Protection	1 x
Analysis	Road Construction -> Environment	4 x
Analysis	Docks -> Environment	4 x
Analysis	Education -> Promotion of Industry	1 x
Analysis	Education -> Environment	3 x
Analysis	Public Health -> Environment	2 x
Analysis	Welfare Programs -> Environmental Protection	1 x
Analysis	Welfare Programs -> Environment	1 x
Analysis	Housing Construction -> Environment	2 x
Analysis	Promotion of Industry -> Standard of Living	2 x
Analysis	Promotion of Industry -> Environment	5 x
Analysis	Environmental Protection -> Public Health	1 x
Analysis	Environmental Protection -> Welfare Programs	1 x
Analysis	Environmental Protection -> Chemical Industry	1 x
Analysis	Environmental Protection -> Standard of Living	1 x
Analysis	Environmental Protection -> Environment	5 x
Analysis	Culture / Leisure -> Resorts / Hotels	2 x
Analysis	Culture / Leisure -> Standard of Living	1 x
Analysis	Culture / Leisure -> Environment	2 x
Analysis	Resorts / Hotels -> Environmental Protection	1 x
Analysis	Resorts / Hotels -> Culture / Leisure	1 x
Analysis	Resorts / Hotels -> Chemical Industry	1 x
Analysis	Resorts / Hotels -> Standard of Living	1 x
Analysis	Resorts / Hotels -> Environment	3 x
Analysis	Chemical Industry -> Education	1 x
Analysis	Chemical Industry -> Environmental Protection	1 x
Analysis	Chemical Industry -> Standard of Living	1 x
Analysis	Chemical Industry -> Environment	6 x
Analysis	Chemical Industry -> Revenue Chemical Industry	1 x
Analysis	Textile Industry -> Promotion of Industry	1 x
Analysis	Textile Industry -> Chemical Industry	1 x
Analysis	Textile Industry -> Standard of Living	1 x
Analysis	Textile Industry -> Environment	4 x
Analysis	Textile Industry -> Revenue Textile Industry	1 x
Analysis	Agriculture -> Standard of Living	1 x
Analysis	Agriculture -> Environment	3 x
Analysis	Agriculture -> Revenue Agriculture	1 x
Analysis	Oil Production -> Environment	6 x
Analysis	Oil Production -> Price of Oil (\$)	1 x
Analysis	Oil Production -> Revenue Export / Oil	2 x
Analysis	Fishing -> Environment	4 x

Overview with remarks

Evaluation criteria:

Percent

Percent 50

<b>Optimisation of objectives</b>	<b>43</b>		
-----------------------------------	-----------	--	--

= Optimisation level of main objectives at the end of the governing period (18th round) compared to the standard reference sample.

For further information refer to

> Page 6: "History log of system variables": State of main objectives in the 18th round? Balance achieved? Does one of the main objectives drop back significantly?

> Page 2: "Optimisation of objectives during the exercise": Is it possible to make up again for the "drop" in the 8th round (start of the crisis phase)? How quickly and how noticeably does an upward trend become apparent?


<b>Long-term optimisation of objectives</b>	<b>36</b>		
---	-----------	--	--

= Optimisation level of main objectives after the extrapolation phase (23rd round) compared to the standard reference sample.

For further information refer to

> Page 6: "History log of system variables": State of main objectives in the 23rd round? Are there any noticeably positive or negative development trends between the 18th and 23rd rounds or do the objectives remain stable?

> Page 2: "Optimisation of objectives during the exercise": What is development like in the extrapolation phase?

<b>Willingness to take risks / Intensity of interventions</b>	<b>5</b>		
---	----------	---	--

= Level of budget changes over all rounds compared to the standard reference sample.

For further information refer to


> Page 7: "Time and type of decisions": When and for which variables do significant changes take place? Does the participant act aggressively (significantly increasing budgets) or defensively (significantly decreasing many budgets)? Is there a radical adjustment of the budget or are there extreme settings (1000 or 9900) among the variables?

<b>Number of interventions</b>	<b>5</b>		
--------------------------------	----------	---	--

= Number of budget changes compared to the standard reference sample.

For further information refer to

> Page 7: "Time and type of decisions": Are interventions selective or are changes made in a large proportion of budgets in every round? Does the complexity of the package of measures differ in different phases (initial phase, crisis phase, consolidation phase)?

<b>Use of methodological resources</b>	<b>87</b>		
--	-----------	--	--


= Frequency of requests for information (analyses, history checks, information texts) compared to the standard reference sample.

For further information refer to

> Page 4: "Proportion of action types in the overall activity": What is the ratio between the number of requests for information (history, analysis, information) and the number of decisions? Is it balanced, do the decisions predominate or are the requests for information clearly in the majority?

> Page 8: "Time and type of system interventions": When and where do analyses, history checks, requests for information take place? Are the possibilities for obtaining information used meaningfully/purposefully or are there too many redundant or "senseless" requests?


> Page 6: "History log of system variables": Was the time used up completely or were rounds aborted prematurely (< 300 seconds)?

<b>Early utilisation of information</b>	<b>53</b>		
---	-----------	--	--

= Average time for first use of methodological resources on the variables compared to the standard reference sample. The earlier in the simulation process research is carried out into information about as many variables as possible, the higher the value.

For further information refer to


> Page 8: "Time and type of system interventions": When is the possibility for obtaining information about the variables used for the first time? Are there any variables where the possibilities for obtaining information are never used?

<b>Monitoring the development of objectives</b>	<b>29</b>		
---	-----------	--	--

= Frequency of history checking for the target variables (right-hand side) compared to the standard reference sample.

For further information refer to

> Page 8: "Time and type of system interventions": When and how often is the development of target variables (main and secondary objectives) monitored by means of the history check?


<b>Economic Efficiency</b>	<b>45</b>		
----------------------------	-----------	--	--

= Level of percentage return on investment (ratio of expenditure to income) regardless of the level of investments in the various economic areas compared to the standard reference sample. "Economising", i.e. optimising the ratio of income to expenditure (and therefore of the Finance objective) is not measured here!

For further information refer to

> Page 7: "Time and type of decisions": Are the budgets in the economic sectors changed at an early stage in line with their profitability? Is there anything conspicuous about the level of the investment sums?

Attention: Economic efficiency often turns out high with very low investment sums but even so not enough capital is generally accumulated in such cases to enable all the main objectives to be optimised.

<b>Flexibility / strategy changes</b>	<b>37</b>		
---------------------------------------	-----------	--	--

= Frequency and intensity of interventions when changes occur in the general economic conditions or significant development trends arise compared to the standard reference sample

For further information refer to

> Page 7: "Time and type of decisions": Is there a conspicuously high number of strategy changes? Are budgets increased and decreased several times?


> Page 6: "History log of system variables": Are appropriate budget changes introduced to rapidly reverse the trend where clear over-optimisation has taken place or a strong downward trend has become apparent?

<b>Prioritisation of main objectives</b>	<b>47</b>		
--	-----------	--	--

= Prioritisation of the main objectives in relation to secondary objectives during the entire governing period compared to the standard reference sample. A low value indicates that at least one of the secondary objectives over the course of the simulation has been optimised more in the long-term than the lowest main objective.

For further information refer to


> Page 6: "History log of system variables": Are the values of the secondary objectives over the course of the simulation significantly higher or lower than those of the main objectives?

<b>Intensity of interventions in the crisis phase</b>	<b>5</b>		
---	----------	---	--

= Intensity of budget changes overall in the crisis phase (rounds 9 - 14) compared to the standard reference sample.

For further information refer to

> Page 7: "Time and type of decisions": Does the participant act aggressively in the crisis phase (significantly increasing budgets) or defensively (significantly decreasing many budgets)? Is there a radical adjustment of the budget or are there extreme settings (1000 or 9900) among the variables? Does the intensity of interventions differ in the crisis phase from other phases?

<b>Monitoring of objectives in the crisis phase</b>	<b>85</b>		
---	-----------	--	--

= Frequency of history checking for the variables in the crisis phase (rounds 9 - 14) compared to the standard reference sample.

For further information refer to

> Page 8: "Time and type of system interventions": When and how often is the development of target variables (main and secondary objectives) in the crisis phase monitored by means of the history check? Does the monitoring behaviour differ in the crisis phase from other phases?

## Overzicht in vijf competenties

### Doelmatig beslissen

Het bereiken van de opgegeven doelstellingen door goed afwegen van de alternatieven die er in een gegeven situatie mogelijk zijn. De aanwezige middelen gericht en kostenbewust toepassen om het vooraf gestelde doel te bereiken. Het uitwerken van een strategie.

Is niet in staat gebleken de opgegeven doelen te bereiken. De strategie is niet gerealiseerd. Beslissingen volgen niet de opgegeven strategie. De genomen beslissingen hebben een lage kwaliteit. De middelen zijn onvoldoende aangewend voor lange termijn doelen.

1 2 3 4 5

Doelstellingen zijn behaald door gericht beslissingen te nemen. Is doelgericht: past tactieken en beslissingen aan bij de strategie. Let bij veranderingen op effect op de strategische doelen. Besteedt kapitaal en middelen effectief en kostenbewust.

### Gebruik van informatie

Goed en vroegtijdig raadplegen van beschikbare informatiebronnen. Het gebruik van informatie over de situatie, de variabelen, de ontwikkelingen en de alternatieven. Gebruik van feedback over de eerdere aanpak en beslissingen.

Gebruikt weinig informatie. Doet weinig analyses voordat er iets wordt besloten. Verkrijgt informatie vooral door te handelen en effecten daarop waar te nemen. Handelt intuïtief. Neemt geen tijd voor feedback over eigen handelen.

1 2 3 4 5

Gebruikt veel informatie. Zoekt uitvoerig naar achtergrond informatie, trends en verbanden. Neemt veel tijd voor analyse. Besteedt aandacht aan feedback uit omgeving. Handelt na raadplegen van rationele informatie; feiten en cijfers.

### Daadkrachtig optreden en risico's nemen

Een aanpak kiezen die grote veranderingen met zich meebrengt. Rigoureuze beslissingen nemen. Veel beslissingen nemen in een kort tijd bestek. Snel reageren op een nieuwe gebeurtenis.

Is iemand die weinig beslissingen neemt of kleine beslissingen neemt. Doet een enkele ingreep in een situatie. Tracht kleine veranderingen aan te brengen. Heeft veel beheersing over het eigen gedrag. Kan passief zijn.

1 2 3 4 5

Beslist door risico's te nemen. Reikwijdte en gevolg van de beslissingen zijn groot. Neemt veel beslissingen. Komt mogelijk in situaties waarin niet meer duidelijk is welk effect een bepaalde ingreep heeft gehad.

### Prioriteiten stellen en verdelen

Bij het nemen van de beslissingen goed letten op de gegeven doelstellingen. De waarde van diverse alternatieven beoordelen op de mate waarin zij het doel helpen bereiken. De aanwezige middelen en plannen goed spreiden over meerdere doelen. Onderscheid maken tussen strategische doelen en bijzaken.

Verliest de strategie of doelstellingen uit het oog. Streeft eigen (sub-) doelen na. Doet ingrepen in de situatie en neemt beslissingen die zijdelingse effecten hebben. Het verband met de strategie is gevoelsmatig of onduidelijk. Verliest effectiviteit door spreiding van middelen en energie.

1 2 3 4 5

Toont strategiegericht gedrag. Concentreert zich op de prioriteiten. Beweegt zich op de juiste terreinen. Heeft de voornaamste doelen en resultaten helder voor ogen. Investerings leveren een hoog rendement op.

### Alert reageren op nieuwe gebeurtenissen

Tijdig reageren op nieuwe informatie uit de omgeving. Waarnemen van veranderingen in de situatie om vervolgens beslissingen te nemen die inspelen op de verandering of de nieuwe situatie.

Reageert nauwelijks op veranderingen in de situatie. Contingenties die de haalbaarheid van doelstellingen beïnvloeden worden genegeerd. Maakt mogelijk geen gebruik van veranderingen. Is daardoor evenwichtig in handelen.

1 2 3 4 5

Reageert op veranderingen in de omgeving. Wijzigingen in de situatie worden waargenomen. Het eigen beslissen wordt vervolgens bijgestuurd. Is effectief door goed op de situatie in te spelen. Reageert tijdig.

**Localization**

Name	Value
localization-row-count	
lang-culture	en
product.name	Online Simulation Utopia
producer	scharley & partner mdc gmbh
analysis	Analysis
cust-01.0	Result
information	Information
period	Period
goal	Goal
stlv	StLv
env	Env
finances	Finances
ssec	Ssec
house	House
job	Job
tran	Tran
time	Time
view6	Log of the System's Variables (Period No. 1 to 23)
overview	Overview
overview1	Optimisation of objectives
overview2	Long-term optimisation of objectives
overview3	Willingness to take risks / Intensity of interventions
overview4	Number of interventions
overview5	Use of methodological resources
overview6	Early utilisation of information
overview7	Monitoring the development of objectives
overview8	Economic Efficiency
overview9	Flexibility / strategy changes
overview10	Prioritisation of main objectives
overview11	Intensity of interventions in the crisis phase
overview12	Monitoring of objectives in the crisis phase
stdsample	Standard sample
resultfor	Result for participant:
view2	Goal Optimization
view3	Activity in the Course of the Exercise
view4	Percent of Individual Types of Action
view5	Percent of Types of Actions Per Period
decision	Decision
trend	Trend
analysis	Analysis
view7	Time and Type of Decisions
view8	Time and Type of Interventions in the System
view9	Activity log
actions	Actions
number	No.
pointtime	Time
action	Action
variable	Variable
valueold	Old value
valuenew	New value
criteria	Evaluation criteria:
percentrank1	Percent
outputprint	Printout selection
outputpage	Page selection
print	&Print
cancel	&Cancel
defaultprinter	Use default printer
previous	Previous
next	Next
useprinter	Use xxx
progcaption	Utopia Evaluation program
evalcaption	Utopia Result